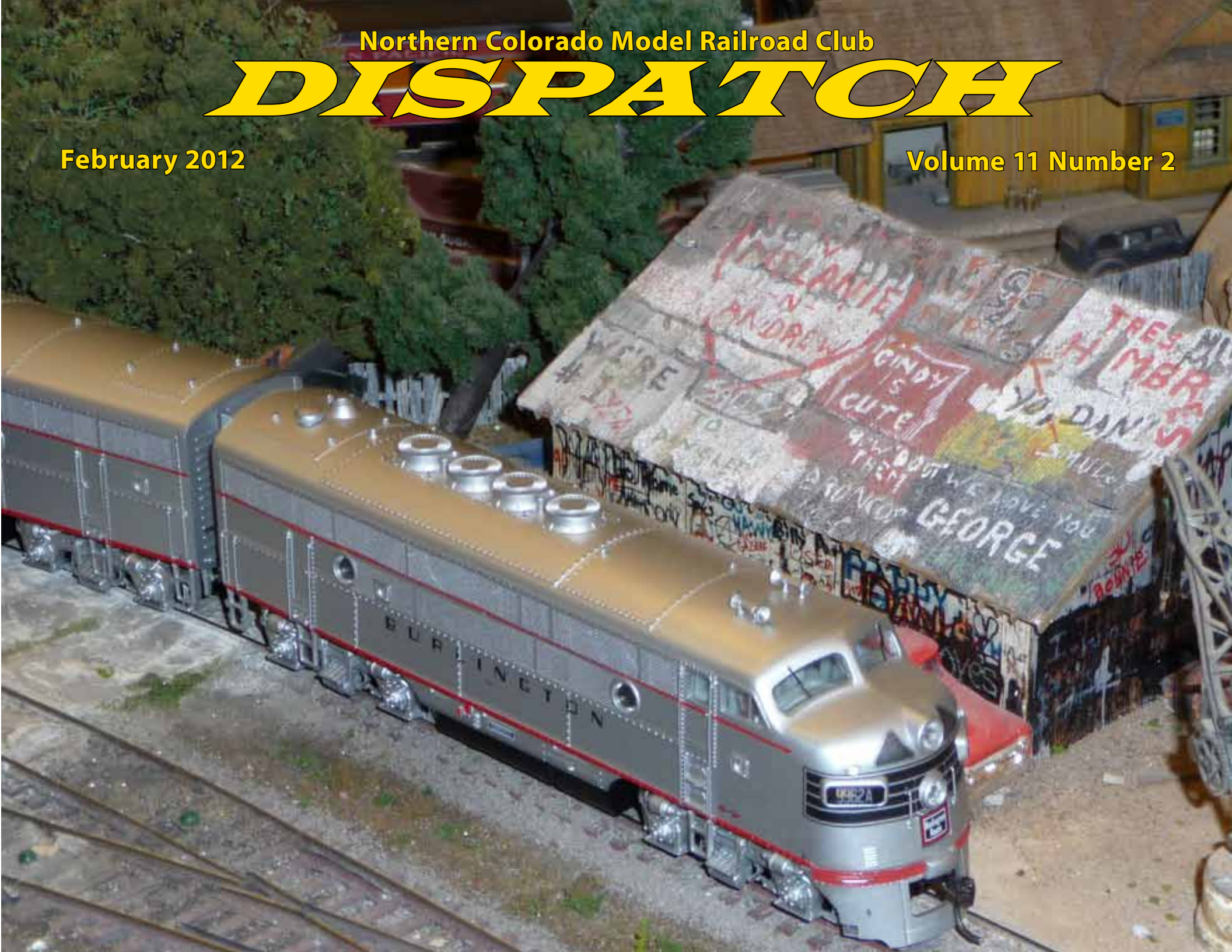


Northern Colorado Model Railroad Club

DISPATCH

February 2012

Volume 11 Number 2



The Dispatch is the official publication of the Northern Colorado Model Railroad Club (NCMRC). It is published monthly to keep the membership informed of all meetings and activities of the club, to recognize achievements of club members in the hobby of model railroading, and to encourage all members in the personal practice of the many aspects of the hobby.

Newsletter Staff

Editor: Bill Kepner drgw0579@comcast.net
 Associate Editors: Dave Zamzow, Ed Hurtubis, and Chase Kepner
 Production Assistant: Chuck Pieper

NORTHERN COLORADO MODEL RAILROAD CLUB OFFICERS

President	Bob Owens	2012-2013
Secretary	Jon Sawyer	2011-2012
Treasurer	Bill Beranek	2012-2013

DIRECTORS

Rick Davison	2012-2013
Peter Eberhard	2011-2012
Doug Geiger	2012-2013
Brian Kindt	2011-2012

DEPARTMENTS

Contest	Rick Inglis
Database Manager	Bill Beranek
Events Coordinator	SanDee Michaelson
Helper District Supt	Rick Inglis
Historian	Chuck Hagemeister
Club Layout Supt	Open
Layout Dispatcher	Bob Owens
Layout Tours	Craig Linn
Library	Paul Overmyer Brian Blunk
Membership	Rich Wilson
Newsletter	Bill Kepner
NMRA Liaison	Don Allender
Programs	Doug Geiger
Website Manager	Rob Toler
Webmaster	Roger Smith

Email addresses for the above are available to registered club members on the NCMRC website.

NCMRC Website: <http://www.ncmrc.org>
 Email Contact: owens.rc@gmail.com
 NCMRC Address: P.O. Box 271493, Fort Collins, CO 80527-1493



In this Issue

Making Lemonade from Lemons	3
Scenes from Jack Rice's Layout	4
Club Timetable and Information	16

Cover

A set of Burlington F3's pulling the California Zephyr past the graffiti shed in Columbia on Jack Rice's Columbia and Western layout. *Photo by Jack Rice*

Note from the Editor

What do you do when you have a lot of good photos from a layout tour, and you can't figure out which ones you can't use? You dedicate the entire issue to one of the best detailed layouts that most of us will ever see! Because of the great details that one only sees when they spend a lot of time studying everything on the layout, the DISPATCH Staff has decided to make the unprecedented decision to dedicate the entire issue to Jack, his wife Cindy, and their great Columbia and Western. If pictures are worth 1000 words, then you have your reading cut out for you.

This Month's Videos

Terl Robinson sent this photo of a railroad bridge replacement in Reading, (no not PA) England. It's one of the best time-elapsd videos I've ever seen.

<http://www.flixxy.com/rail-bridge-replacement-timelapse.htm>



Editorial and photos by Doug Geiger

“Making lemonade from lemons” – a cliché we tend to hear over and over. In mid-December 2011, I got a chance to put that worn-out message to good use. You see, because of sewer backup problems in our 35-year old house, all the cast-iron pipe buried in the basement floor had to be removed and replaced. And my model railroad, the Granite Mountain Railway, was in the way.

At first glance, it seemed that the whole railroad (begun in 1981) would have to be dismantled and removed. Talk about a depressing day! But after several discussions with the repair personnel, it was determined that only a selected portion of the layout had to be completely taken out. But still, about 20% of the layout had to come down. Everything had to be disconnected and discarded to make room for the workmen: benchwork, track, wiring, and structures (which mostly came up intact). For those of you familiar with the Granite Mountain, we tore up all of Stillaquamish (where the Milwaukee electrics came into the finished scenery from staging), the western-most section of Westview (where the ocean and car float was), the helix under that ocean scene, and the throat to the Portland staging yard.

After covering up the layout completely with plastic sheeting with the help of some great friends, the contractor jack hammered the floor out, removed the misbehaving pipes, installed new plastic sewer pipe and a backflow preventer. Then new concrete was poured and later painted. Now we had a nice, clean vacant piece of real estate in the basement, surrounded by 30 years of finished HO-scale model railroad.

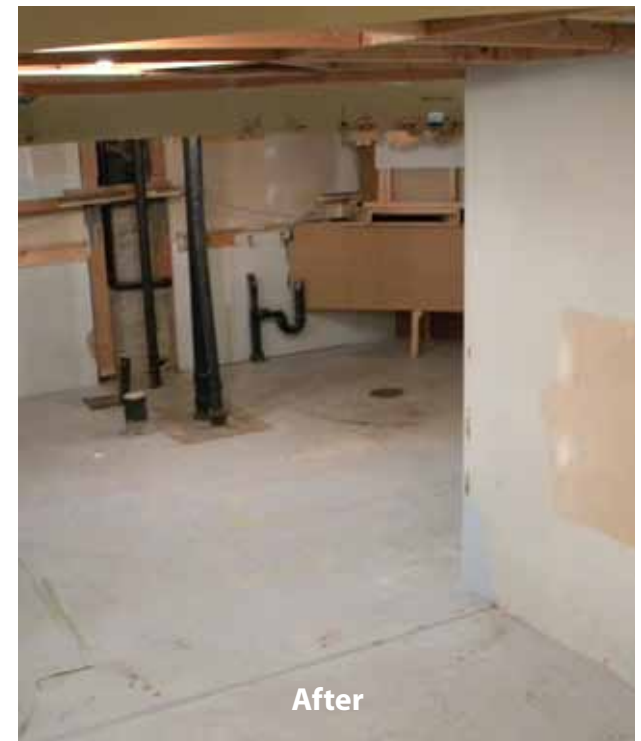
Since everything was gone, it was time for some heavy-duty planning. Remember, “making lemonade from lemons?” It was time to make some lemonade. To begin with, that single-tracked helix had always been a bottleneck during operations because two main staging yards (Portland and Chicago) relied on that same piece of track. With the helix now gone, it became rather

obvious to double-track its replacement with separate tracks to the two staging yards. So far, so good. Next, the siding in Stillaquamish was always too short...so the solution will be to extend that siding during the new construction.

And finally, some of you may know I have acquired a recent interest in steel mill modeling and had planned to change part of the existing layout (the D&RGW town of Colton) to add a blast furnace and electric arc furnace, a foundry, several mills, a basic oxygen furnace, along with all the supporting buildings, and trackage. Although technically feasible, the resultant Colton Steel would have had to be shoehorned around existing trackage, buildings, and scenery. And I would have had to destroy part of the eastern half of the layout (around Mesa Yard) to accommodate the new structures and

operations. More destruction to a finished layout! Not an ideal situation, but it would have been workable. Now, with the empty real estate over the new double tracked helix, Colton Steel will become Pacific Steel. More area, more logical operations, and no tearing out existing layout! And since Stillaquamish will have to be rebuilt anyway, Pacific Steel can be expanded logically into that area. So, lots of good will come out of that initial shock of tearing out large portions of a finished model railroad. Of course, it will take many months to replace the demolished sections, but then lemonade should be sipped, not gulped.

If you want to see just how much lemonade we made from our “lemon,” come visit us at our annual open house in late September. – *Doug Geiger, Club Director and Program Chairman*



Scenes from Jack Rice's Layout

Captions by Jack Rice

On January 28, 2012, our club was invited to Jack Rice's Columbia & Western Layout Tour. This 32'x20' layout modeled in the 1950's has spectacular scenery, amazing animations, and amazing scratch built buildings. This has to be one of the most highly detailed model railroads in the state, if not the world. It helps that Jack has a bit of a sense of humor, and that he is an excellent craftsman. Since there's a story behind each of these scenes, the editor asked Jack to write the captions.

Many of the scenes were new since the last club tour several years ago. Of particular note was "Carlsgood Caverns," complete with a lunch room (the size doubled with a mirror), stalactites and stalagmites. I wonder if there are also flying bats (probably only at night!). For those of you who didn't make the tour, you really missed out! **I**

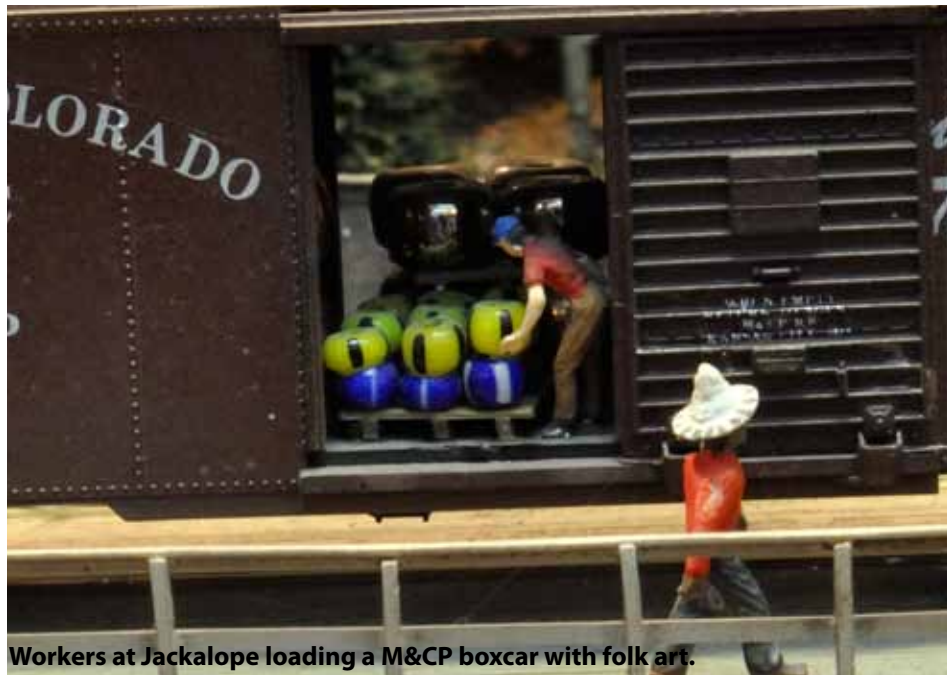
Below: Southern Pacific 4-8-8-2, AC4 #4104 on the C&W. (The two railroads are considering a merger). **Right top:** Jack and Cindy Rice looking across the C&W's Columbia engine facility. Cindy painted the backdrops. *Photo by Jack Rice.* **Right bottom:** Missouri & Colorado Pacific NW2 #1250 crossing Fall River. *Uncredited photos by Bill Kepner*



Mount Stogemore



C&W 2-8-0 #243 pulling a local passenger train through rock tunnel



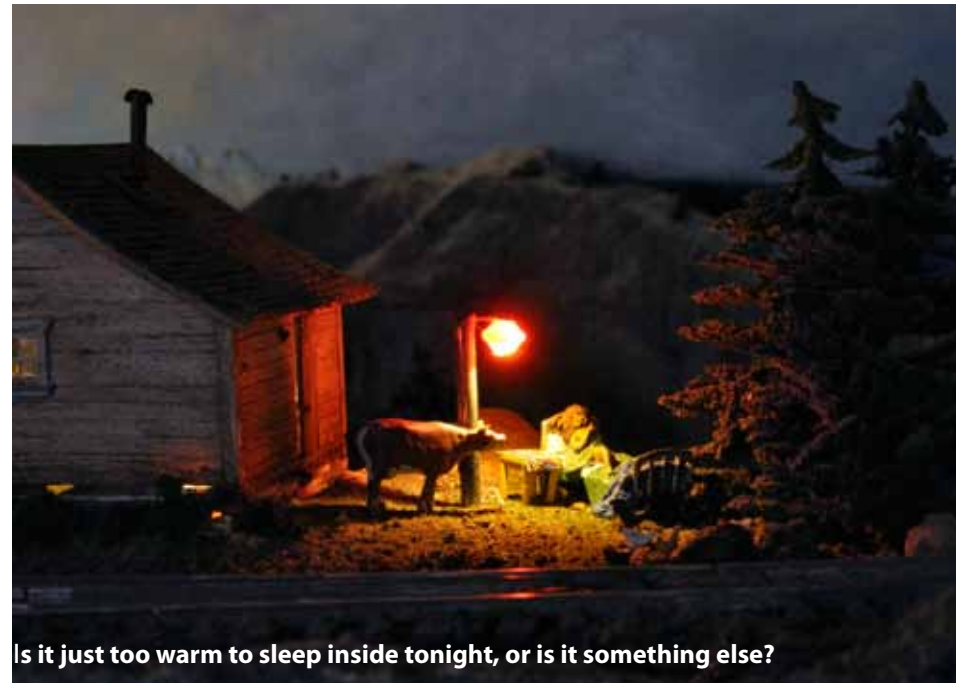
Workers at Jackalope loading a M&CP boxcar with folk art.



Atkins Lumber Company, named after Jack's good friend, Gary Atkins. Photo by Jack Rice



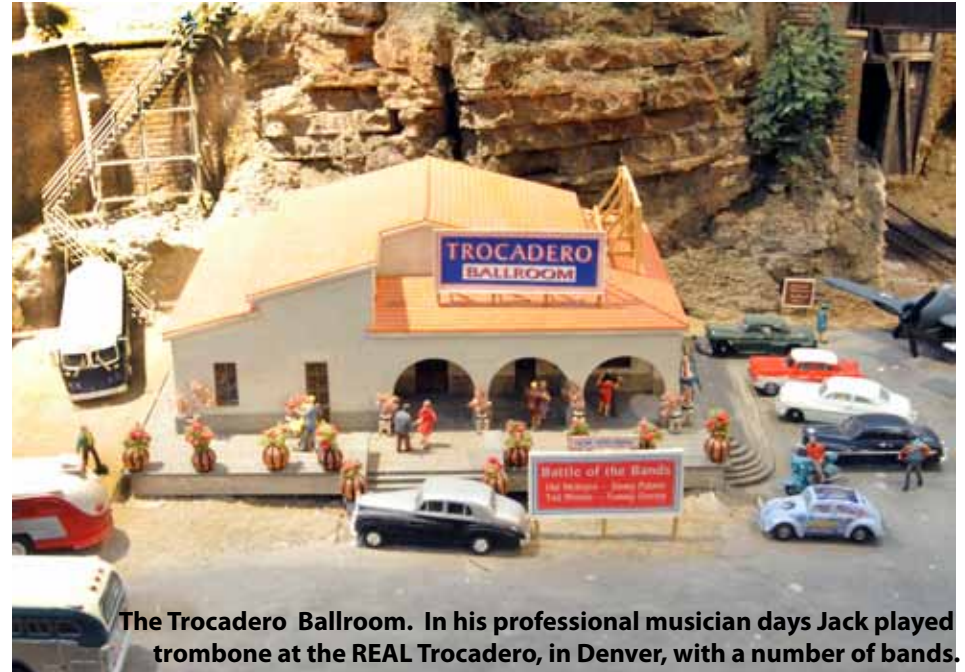
The NCMRC on a Missouri & Colorado fan trip *Photo by Jack Rice*



Is it just too warm to sleep inside tonight, or is it something else?



Disturbance at Slick Willy's



The Trocadero Ballroom. In his professional musician days Jack played trombone at the REAL Trocadero, in Denver, with a number of bands.



"Buy One, Get One Free Fireworks" Company



Don't light a match!



Pots for sale



Historical Railroad Station at Bennett, with a monument to the town's namesake a famous old trumpet player.

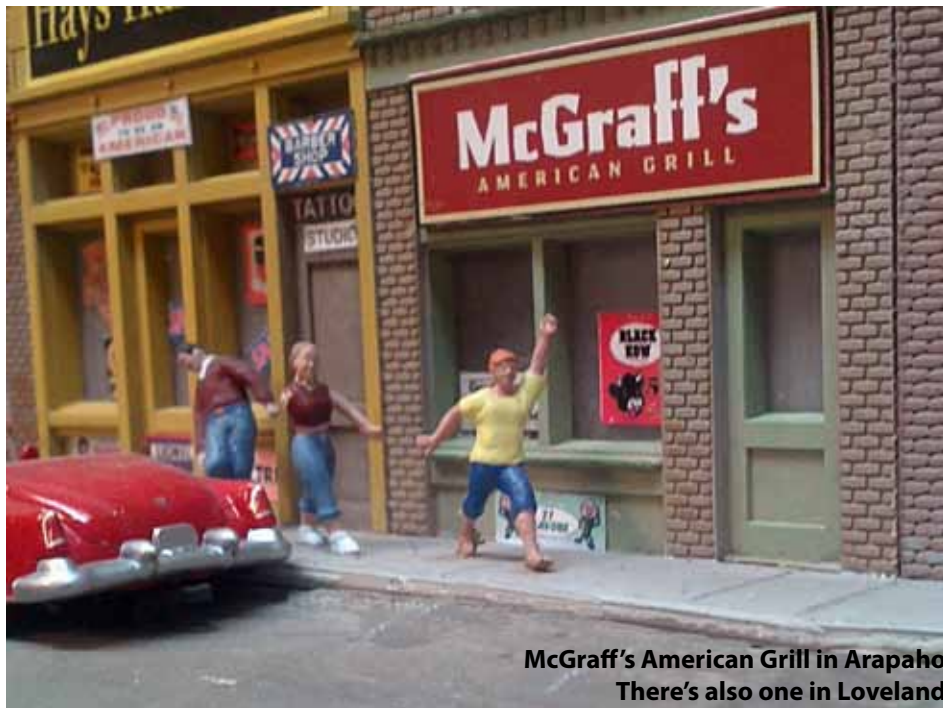




Sunday afternoon coasting party on the B&S.



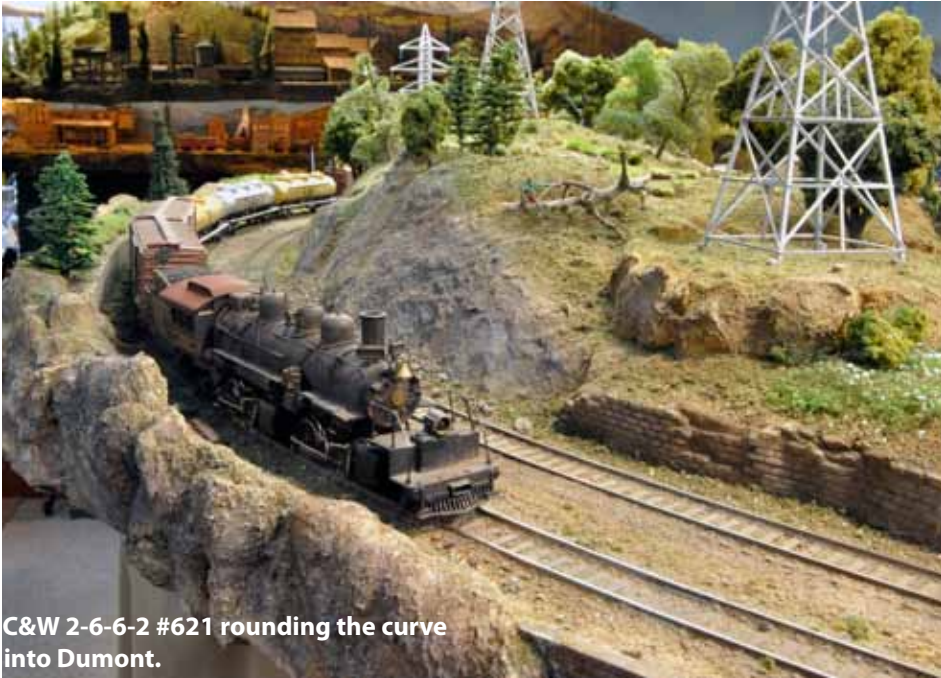
What are all those people doing here?



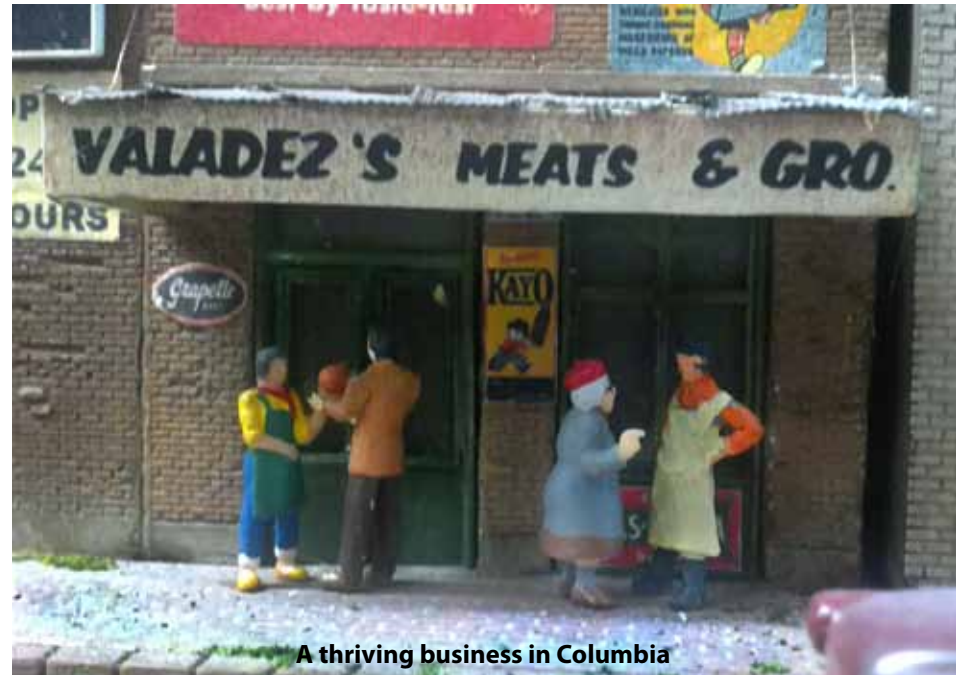
McGruff's American Grill in Arapaho. There's also one in Loveland



Bennett Antique Store



C&W 2-6-6-2 #621 rounding the curve into Dumont.



A thriving business in Columbia



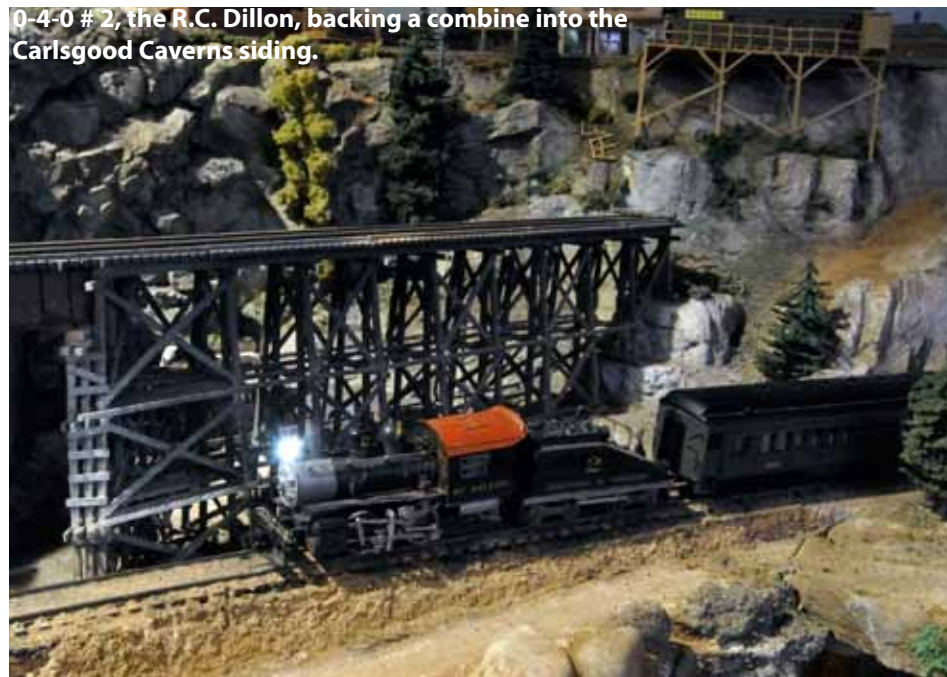
'Hey, look what I caught.'
Photo by Bill Kepner



Concert in the park.



Waiting for the concert at Hirsch Concert Hall.



0-4-0 # 2, the R.C. Dillon, backing a combine into the Carlsgood Caverns siding.



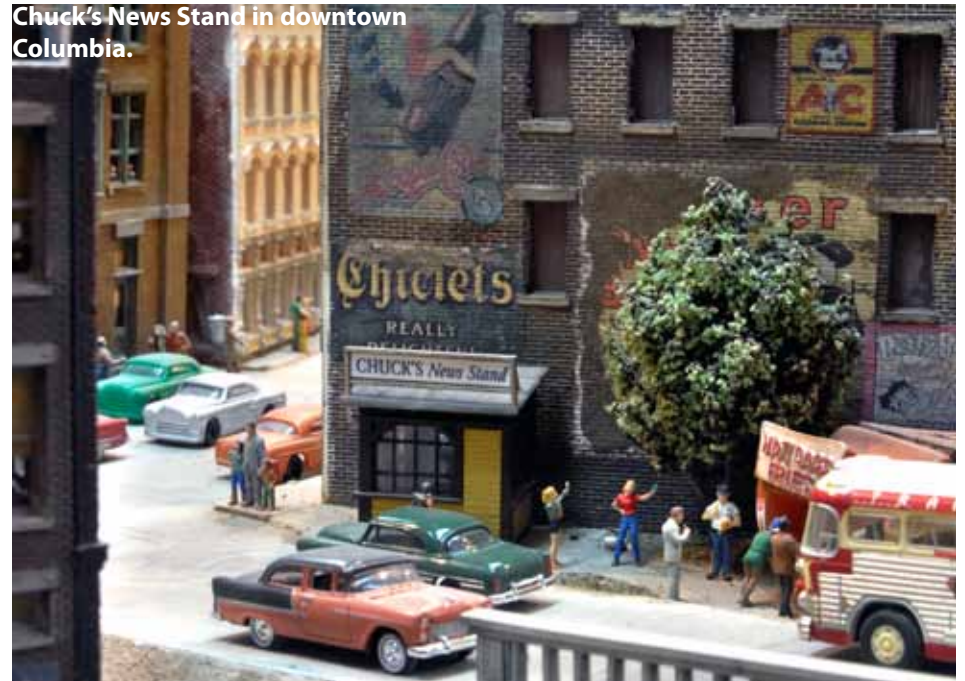
Picnic in the Great Room at Carlsgood Caverns.



Carlsgood Caverns (one guy was so overcome by the view that he fell over).
Photo by Jack C. Rice



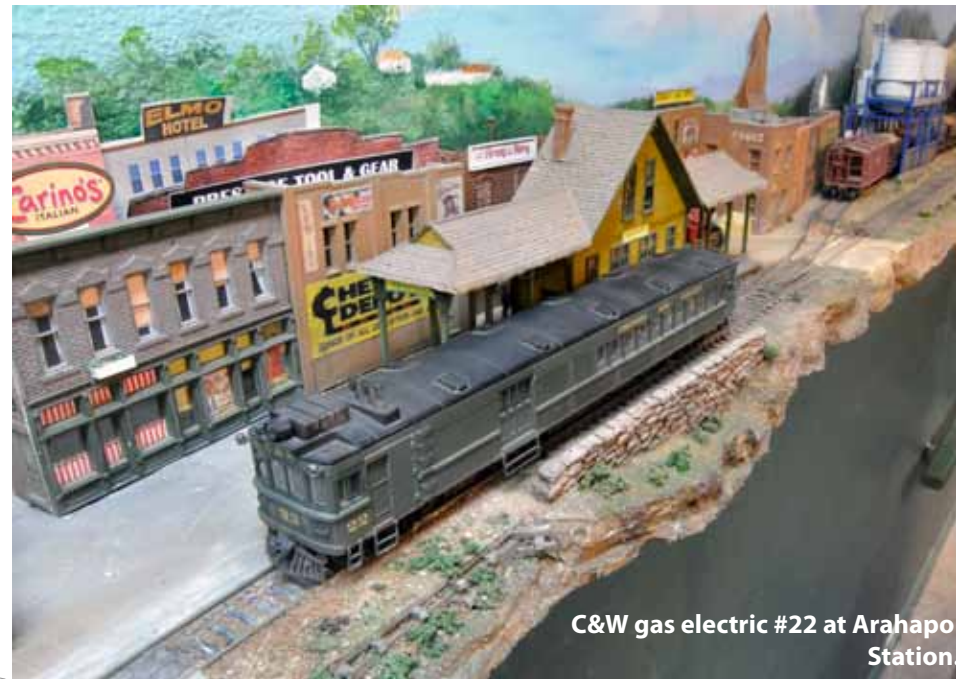
Reddy Kilowatt, Alternative Energy into the 21st Century



Chuck's News Stand in downtown Columbia.



The locomotive graveyard at C&W's Columbia roundhouse. Photo by Jack Rice



C&W gas electric #22 at Arhapo Station



Even little green outer space guys have to go to the bathroom.
Photo by Jack Rice



Let's have burritos for lunch



Everybody likes to have his picture taken. (That space ship looks remarkably like a computer Track-Ball, doesn't it?)



Auto show sponsored by the Columbia Classic Cars Club.



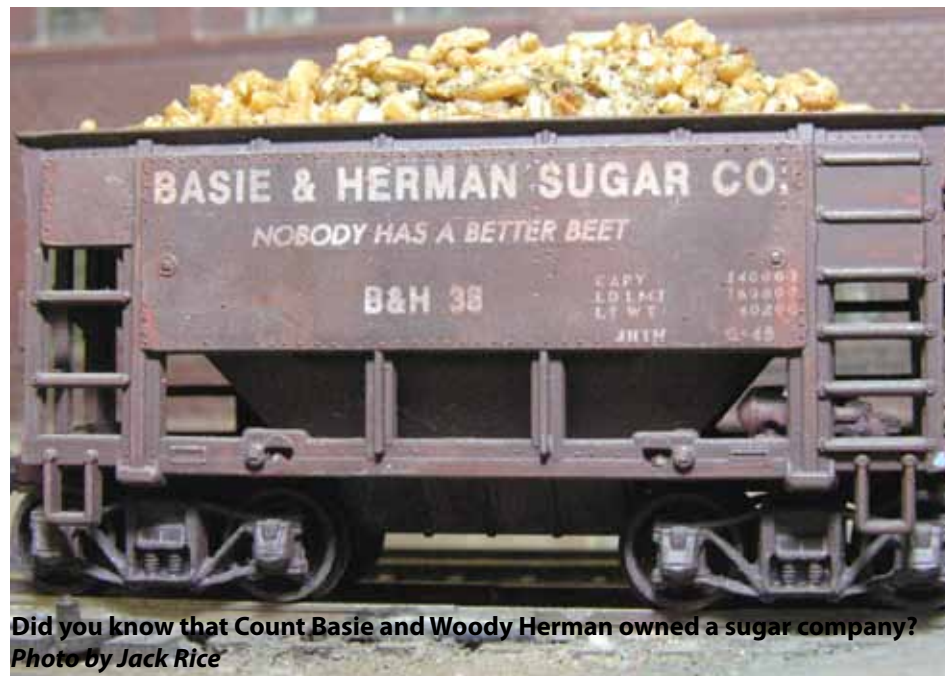
Trailblazer Hotel with its famous two story outhouse.
Photo by Jack Rice



Inside the abandoned Bevier & Southern engine house.
Photo by Jack Rice



Those are really big snakes! *Photo by Jack Rice*



Did you know that Count Basie and Woody Herman owned a sugar company?
Photo by Jack Rice


FEBRUARY MEETING: Thursday, February 23, 2012 at 7 PM, Pulliam Building, 545 N. Cleveland, Loveland
PROGRAM: Enhancing Layout Reliability by John Parker
LAYOUT TOUR: Denver Society of Model Railroaders held on February 11th
CONTEST: Motive Power
BOARD MEETING: Thursday, March 1, 2012, Harmony Presbyterian Church 400 E. Boardwalk, Fort Collins

March **DISPATCH** PUBLICATION DEADLINE: Friday, March 9 at 8 AM Submissions always accepted early.
 Send to drgw0579@comcast.net

TRACKS

Two Decades of the Great Western Railway
 Photographs by Kirk & W. Kirk Orndorff


February 18 – April 15, 2012
 Meet the Artist Reception: Saturday, February 18, 2 - 4pm




SPECIAL PROGRAMS

<p>History of the Great Western Railway with Ken Jessen Saturday, February 25, 2 pm</p> <p>Great Western Railway with photographer Kirk Orndorff Thursday, March 22, 5:30 pm</p>	<p>All Aboard with Margaret Mackie Saturday, April 7, 10:30 am - Noon Grades 1 - 6 Learn about the Great Western Railroad while we incorporate trains and locomotives into artwork. Fee: \$20 (\$16 Museum Members)</p>
--	--

Sponsored by the Sam's Club/Wal-Mart Foundation.



503 N. Lincoln Ave., Loveland, CO 80537



(970) 962-2410

www.cityofloveland.org/museum

Train Show

Rocky Mountain Toy Train Show is scheduled for March 3 and 4, 2012 (Saturday and Sunday 10 to 5) at the Denver Merchandise Mart, 451 East 58th Avenue, Denver, CO 80216 (I-25 at 58th Avenue Exit).

- 2-1/2 Acres of Toy Trains - Over 400 tables of Trains for Sale
- 25 Operating Layouts - Free Workshops and Clinics
- Family Build-A-Layout Project
- Hands-ON Kids Layouts and Ride-On-Train
- Hourly Door Prize Drawings - Free Parking
- Admission - Adults \$8 Good for Both Days, Kids under 12 FREE!
- Military Personnel in Uniform FREE!

Check the website: <http://RockyMountainToyTrainShow.com> for additional details.

Auction

Lionel Collectors Club of America and the Colorado Toy Train Group, LLC are co-sponsoring their next toy train auction on Saturday and Sunday, March 10 and 11, 2012. The auction will be held in Westminster, Colorado, at The Ranch Country Club, 1187 Tejon.

We will auction over 50 N-Gauge, 150 HO-Gauge, and 70 S-Gauge American Flyer lots of trains and accessories on Saturday, March 10th. On Sunday, we will be auctioning 300+ lots of O-Gauge, 3-rail items from the pre-war to the modern periods.

Send an e-mail to coloradotoytrains@msn.com or contact Jim Cathcart at 303-425-1198 for an auction list or additional auction information. (The editor received some additional info too late to include here, you can contact him also if interested)





The Jackalope: Folk Art By The Truckload. Photo by Jack Rice



Jack's reply to the editor's comment about bats: "Yes, there are bats on the ceiling of Carlsgood Caverns, though not visible in the first picture. But they aren't flying, they're just hanging there waiting until it's dark enough to fly out." Photo by Jack Rice